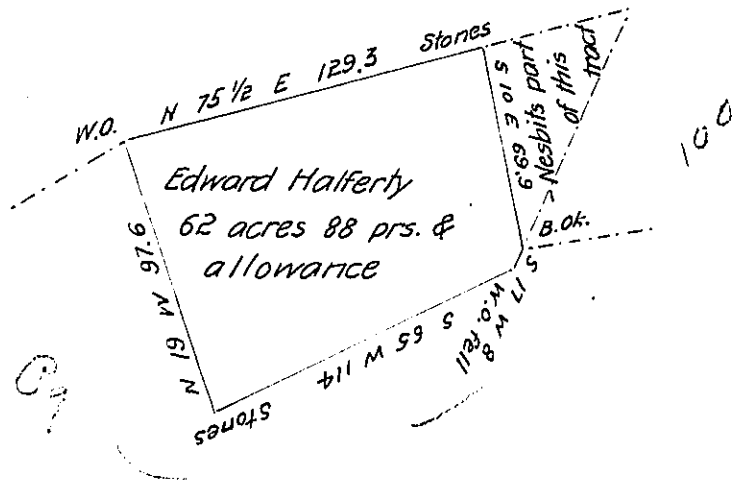


James McCurdy



Edward Halferty

The above described draught is part of a tract of land which was surveyed in pursuance of a Warrant granted to Edward Halferty - dated March 4th 1816 containing sixty two acres eighty eight perches and the allowance proportioned at Six per Cent for roads &c. Situate in Fairfield township in the County of Westmoreland. Surveyed May 2^d 1826

S. L. Carpenter D.S.

Gabriel Hiester Esquire
Surveyor General of Penn^a

I believe the above to be correct

John Gay D.S.

IN TESTIMONY that the above is a copy of the original remaining on file in the Department of Internal Affairs of Pennsylvania, made conformably to an Act of Assembly approved the 16th day of February, 1833, I have hereunto set my Hand and caused the Seal of said Department to be affixed at Harrisburg, this twentieth day of May 1905

Isaac R. Brown
Secretary of Internal Affairs.